



## Let's Setup Your New Account.

Welcome to Atmail Cloud. This guide will show you how to setup your new email account.

|   |                                  |
|---|----------------------------------|
| <b>Incoming Mail Server</b>               | mooramooraa.atmailcloud.com      |
| <b>Outgoing Mail Server</b>               | mooramooraa.atmailcloud.com      |
| <b>Incoming Mail Port</b>                 | 143                              |
| <b>Outgoing Mail Port</b>                 | 25 or 587                        |
| <b>Account Type</b>                       | IMAP                             |
| <b>Use Authentication for SMTP Server</b> | Tick Yes                         |
| <b>Username</b>                           | demo@mooramooraa.atmailcloud.com |
| <b>Calendar Server</b>                    | mooramooraa.atmailcloud.com      |
| <b>Calendar/Contact Server</b>            | CalDAV / CardDAV                 |

## One Click Install: iPad &



### One Click Install For iPad

Visit the link below



### One Click Install For iPhone

Visit the link below

# iPhone

If you have an iPhone or iPad setting up and syncing your email is easy.

Visit

<http://mooramora.atmailcloud.com>

from the device to download a profile (you will be prompted to login again with your account and password).

Alternatively, use your mobile web-browser to access a fully featured mobile client, including email, calendar & contact features. Navigate to the URL

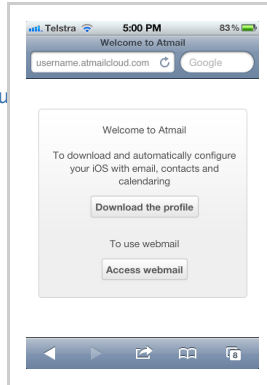
<http://mooramora.atmailcloud.com/index.php/mobile> on your mobile device.

on your iPad

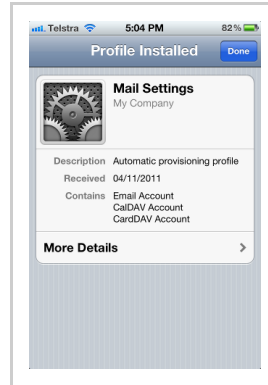
<http://mooramora.atmailcloud.com>

on your phone

<http://mooramora.atmailcloud.com>



On your iPhone visit the link above and you can automatically setup your phone.



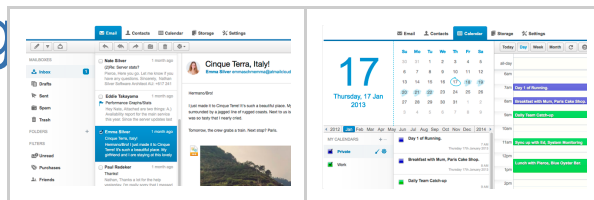
Atmail Cloud will automatically create a profile on your phone for email, calendar and contacts.

# Accessing Webmail

You can access your email, calendar and contacts from anywhere at anytime.

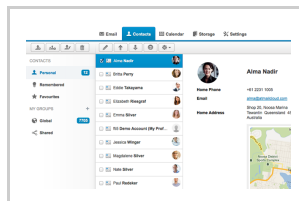
Goto

[mooramora.atmailcloud.com](http://mooramora.atmailcloud.com) and use your normal username & password.



**Webmail:** Access your email anywhere, anytime in the browser. Fully featured email client, and a joy to use.

**Calendar:** Access your calendar online, send calendar invitations, organize your day and sync it with your mobile-device.

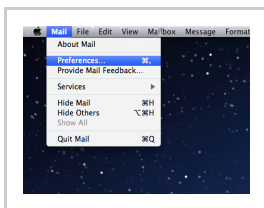


**Contacts:** A complete

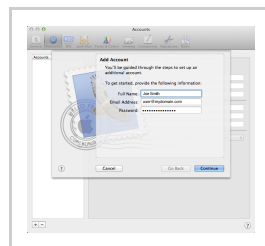
online address-book,  
sync between desktop  
and mobile-clients and  
keep all your contacts  
in one place.



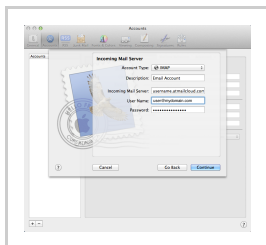
# Setting Up Mac Mail.app



Open mail and from  
the menu in the top  
left, select preferences  
...

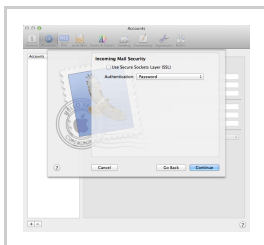


Go to the accounts tab  
and click the plus icon  
at the bottom of the  
box, this will start a  
new account. In the  
add account window,  
enter your name, email  
address and password.  
Press continue.

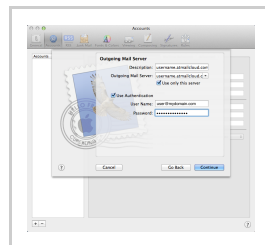


In the incoming mail  
server screen enter the  
following information.

- **Account Type:** IMAP
- **Description:** Whatever you prefer
- **Incoming Mail Server:** mooramooora.atmailcloud.com
- **Username:** demo@mooramooora.atmailcloud.com
- **Password:** Your email account password



Use authentication  
password and press  
continue.

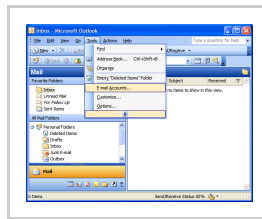


In Outgoing mail server  
enter the following  
details.

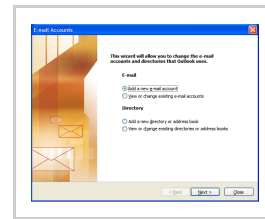
- **Description:** Whatever you prefer
- **Outgoing Mail Server:** mooramooora.atmailcloud.com
- **Use Authentication:** Yes (tick the box)
- **User Name:** demo@mooramooora.atmailcloud.com
- **Password:** Your email account password.



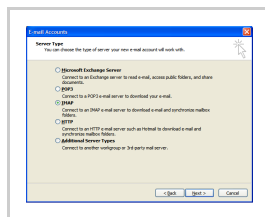
# Setting Up Outlook



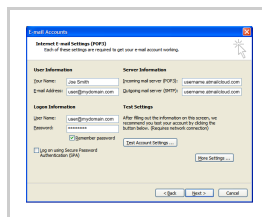
In Microsoft Outlook, from the E-mail Accounts menu, select Tools.



On the E-mail Accounts wizard window, select Add a new e-mail account, and then click Next.

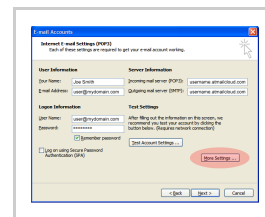


For your server type, select IMAP, and then click Next.

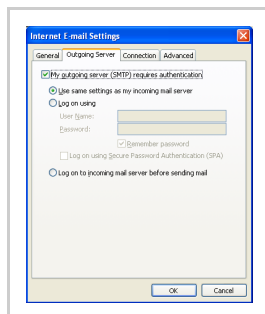


On the Internet E-mail Settings (POP3/IMAP) window, enter your mail settings:

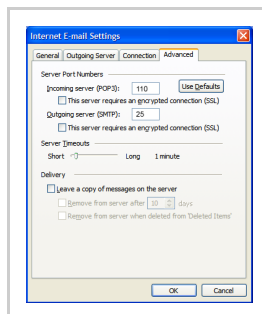
- **Your Name:** Your name.
- **E-mail Address:** demo@mooramora.atmailcloud.com
- **User Name:** demo@mooramora.atmailcloud.com
- **Password:**
- **Incoming mail server** mooramora.atmailcloud.com
- **Outgoing mail server (SMTP)** mooramora.atmailcloud.com



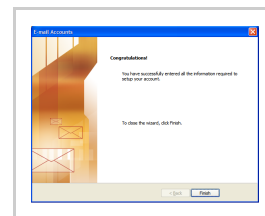
Click the More Settings button.



On the Internet E-mail Settings window, go to



Go to the Advanced tab, and then change

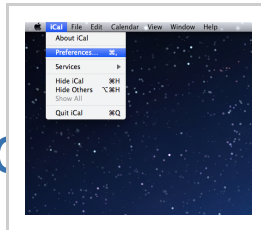


Click Next and that's it, your finished!

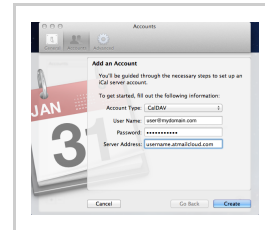
the Outgoing Server tab. Select My outgoing server (SMTP) requires authentication.

the Outgoing server (SMTP) port to 25 or 587. Click OK.

## Calendar & Addressbook Setup



Open iCal and go to Preferences.



Go to the accounts tab and click the plus icon at the bottom of the box, this will start a new account. Enter the following details.

- **Account Type:** CalDAV
- **Username:** demo@mooramooora.atmailcloud.com
- **Password:** Your email account password.
- **Server Address:** mooramooora.atmailcloud.com:8008